

P2000 Security Management System Version 3.10 and Microsoft® Windows® 7 Operating System

Microsoft® Windows® 7 Operating System (OS) is a desktop version of the operating system, which can be used for the P2000 Security Management System server and workstations.

In general, you should follow the instructions for software installation as described in the *P2000 Server/Workstation Software Installation Manual*. This document supplements the manual and describes only the settings specific to systems using Microsoft Windows 7 OS.

Microsoft Windows 7 OS and the P2000 Server

When used as the operating system for the P2000 server, Windows 7 OS is suitable only for small P2000 systems. Microsoft licensing for its desktop versions of operating systems limits the number of client computers to five or less.

All P2000 servers require installation of Internet Information Services (IIS) with ASP.NET. The Internet Information Services are used by Web Access and Metasys® system.

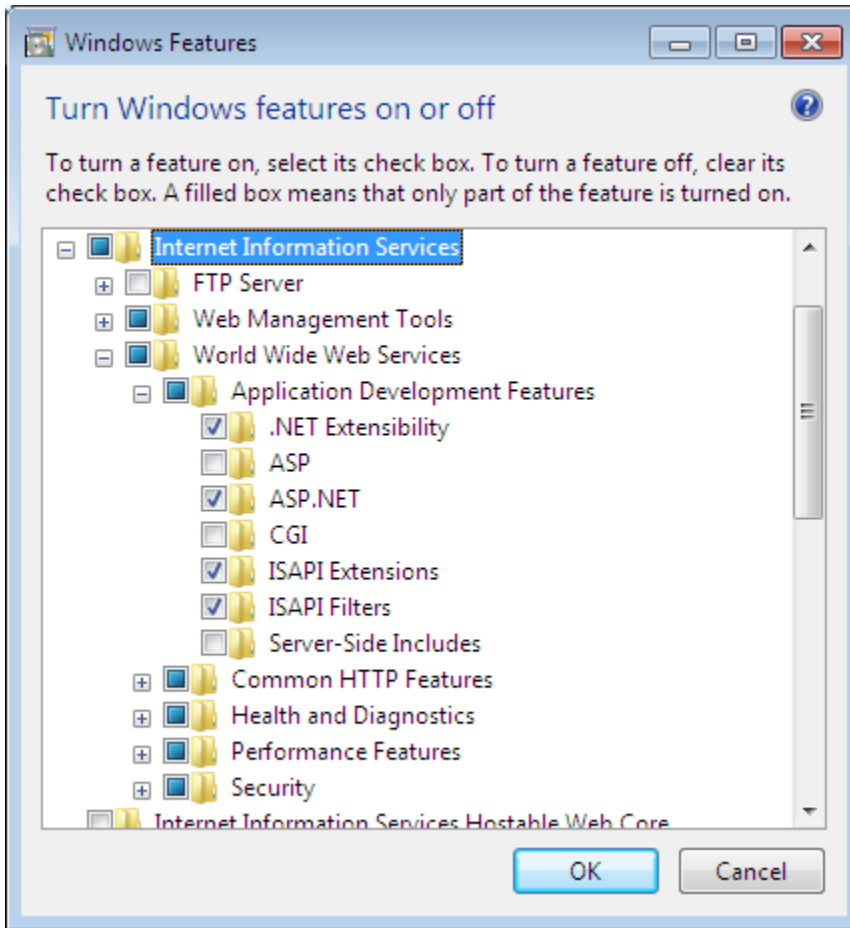
Note: Support for OSI panels requires IIS version 6.0 (as provided with Microsoft Windows XP® OS and Windows Server® 2003 OS) and therefore is not available on systems using Windows 7 OS.

IIS Installation on Microsoft Windows 7

To install IIS on Microsoft Windows 7 OS:

1. Go to **Start > Control Panel** and click **Programs**.
2. A window opens which allows you to adjust your computer's settings. Click the **Turn Windows features on or off** link.
3. In the Windows Features window, select the **Internet Information Services** check box.

- Expand the tree and go to **Internet Information Services > World Wide Web Services > Application and Development Features** to select **ASP.NET**. (When you select it, other check boxes will automatically get selected as well.)



Turning On Selected Windows Features

- Click **OK** in the Windows Features window.
- Close the Control Panel window.