

### Features

#### Fire alarm control panel status annunciation:

- Personal computer based annunciator provides a convenient and intuitive maintenance/service interface to display system activity and query history logs
- Compatible with Simplex® 4100ES, 4010ES, 4007ES 4100U, and 4100 Series fire alarm control panels
- Computer can be used for other functions when access to the fire alarm control panel is not required (connection to fire alarm control panel is supervised; computer must be running with software active at all times)
- Agency listed systems are supplied with Windows 7 Professional 32-bit operating system
- Software compatible with Windows 7, Windows Vista, Windows XP, and Windows 2000 32-bit operating systems
- Listed to UL Standard 864 and ULC Standard S527\*

#### PC Annunciator installation options:

- **Server with Local Client** installs on computer connected directly to the host fire alarm panel
- **Remote Clients** connect to the server via LAN/WAN Ethernet connections; up to 8 can be simultaneously connected (Agency listing is not applicable for Remote Client operation)

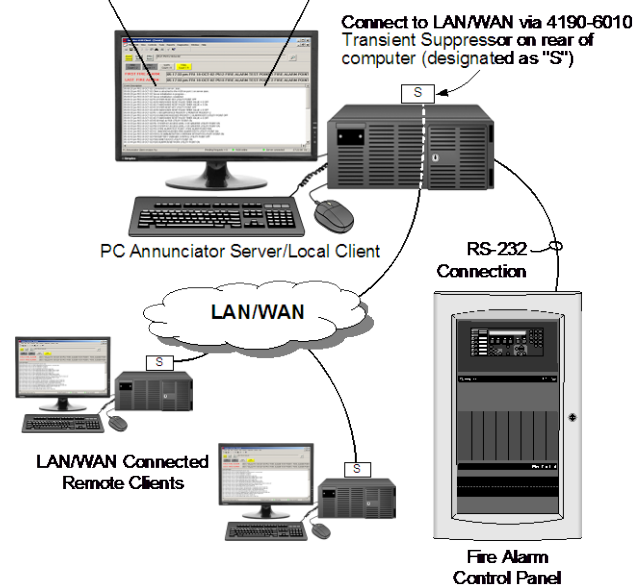
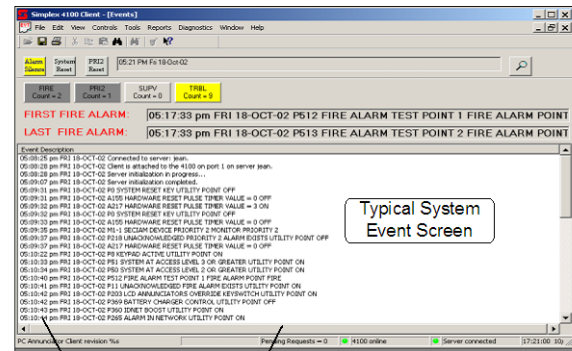
#### General annunciator features:

- Displays Alarm, Supervisory, Priority 2, and Trouble conditions with numerical tallies for each
- Displays first and last alarms; different event types have separate visible indicators with a common audible indicator
- Event logs can be searched and printed
- View and/or print TrueAlarm status reports and service reports (printing requires an available local or network printer)
- Ports are available for local printer connections

#### Local Client system operations\*:

- Connects to host panel's password protected login for protected features access; includes automatic logout with selectable logout timing
- Alarm Silence; System Reset; and Priority 2 Reset
- Global and individual point acknowledge
- Set system time and date; and clear event log
- Individual point access for control or point property revisions
- WALKTEST system test is supported for service convenience

\* Refer to page 2 for additional listing details. ULC listed applications provide annunciation only, operator actions are not available. This product has been approved by the California State Fire Marshal (CSFM) pursuant to Section 13144.1 of the California Health and Safety Code. See CSFM Listing 7300-0026:195 for allowable values and/or conditions concerning material presented in this document. It is subject to re-examination, revision, and possible cancellation. Accepted for use - City of New York Department of Buildings - MEA35-93E. Additional listings may be applicable; contact your local Simplex product supplier for the latest status. Listings and approvals under Simplex Time Recorder Co. are the property of Tyco Fire Protection Products.



#### Selectable packaging:

- Computer is available for desktop or rack mounting and includes keyboard and mouse
- High resolution LCD monitors: 21.5" (546 mm) diagonal for desktop; 42" diagonal for horizontal wall mount applications; or 19" class 18.5" (470 mm) diagonal with touchscreen for 19" rack; **Note: Refer to page 6 for important monitor mounting details**
- Rack mount monitor with touchscreen allows cursor control similar to mouse; press and double press duplicates left mouse button click

#### Description

**4100ES/4100U/4100/4010ES/4007ES Series Simplex fire alarm control panels** process and store extensive system status, history, and individual point information for the connected devices. This information is accessible from the panel's information display. However, with the addition of a PC Annunciator connected to the host panel, the convenient and familiar Microsoft Windows operating system interface provides a more convenient and powerful access to this information for review, limited control, and report generation and printing.

## Connection Options

**Local Client.** A Local Client application is configured on the same computer as the Server and provides a password protected feature set (ULC listed systems provide annunciator only (restricted) features without operator actions). The computer is directly connected to the host control panel. (Note: A computer configured as a Server only without a Local Client is for connection only to Remote Clients. The Server application alone does not provide PC Annunciator features.)

**Remote Client.** 4190-5040 Remote Client applications provide standard annunciator operation (no control available).

## Connection Options (Continued)

**Connection Status Indications.** Remote and Local Clients advise at their computer when connection to the Server is unavailable. Loss of communications to the Server is announced at the host panel.

## Additional Reference

Description	Document	
Applications Software 4190-5040	Installation	579-492
	Operating	579-493
Quick Operation Reference, either software		579-880
LAN Connection Suppressor Installation Instr.		579-900

## Product Selection (see below for additional listings requirements)

Category	Model	Description
<b>System Type</b>	4190-8201	PC Annunciator <b>with hardware</b> ; select Applications Software, computer, and monitor below
	4190-8602	PC Annunciator <b>software only (listings are not applicable with software only)</b> ; computer hardware and operating system supplied separately; select Applications Software below;
<b>Applications Software</b>  <b>Select <u>One</u> per Local or Remote Client;</b> includes dongle and dongle support software (Security Service) for <b><u>One</u></b> Client License (dongle is not required to operate Server function)	4190-5040	<p><b>With 4190-8201, Pre-installed in Hardware</b>; provides PC Annunciator Server and a Local Client with <i>password protected</i> features (Annunciator with Control for Local Client); see additional listings reference below; ULC listed Local Client is Annunciator only</p> <hr/> <p><b>With 4190-8602, Software Only (listings are not applicable with software only)</b>; can be installed as <u>one</u> of the following:</p> <ol style="list-style-type: none"> <li>1. PC Annunciator Server only (no dongle required).</li> <li>2. <u>or</u> PC Annunciator Server with Local Client providing <i>password protected</i> features (annunciator with control), requires dongle.</li> <li>3. <u>or</u> Remote Client Annunciator (<i>restricted</i>) features, requires dongle.</li> </ol>
<b>Computer Type</b> (select one)	4190-7017	Desktop Computer with Intel i7, 2.10 GHz CPU, 6MB Cache, 4GB RAM, (2) 1TB Hard Drives (minimum) with RAID 1 Controller, DVD R/W, integral audio and amplified speakers, onboard video for up to two displays (1) SVGA and (1) DVI, 2 RS232 Serial ports, 6 USB ports, 1 PS/2 port, dual Gigabit LAN, Passive backplane with (8) PCI, (3) PCIe x 1 and (1) PCIe x 16 slot, keyboard, and mouse; charcoal grey housing
	4190-7018	Rack Mount Computers are pre-installed with Windows 7 Professional (includes CD and license) and with PC Annunciator software.
<b>Transient Suppressor for LAN/WAN Connection</b>	4190-6010	<b>NOTE: Required</b> for agency listing for each PC Annunciator Server and Remote Client LAN/WAN connection, except for server to client connections when both are in the same room
<b>LCD Color Monitor</b> (select one)	4190-7131	21.5" (546 mm) diagonal for desktop applications; black housing
	4190-7234	18.5" (470 mm) diagonal for 19" wide rack mount, with touchscreen; black housing; <b>Note: Refer to page 6 for important monitor mounting details</b>
	4190-7114	42" (1049 mm) diagonal for horizontal wall mount applications; black housing

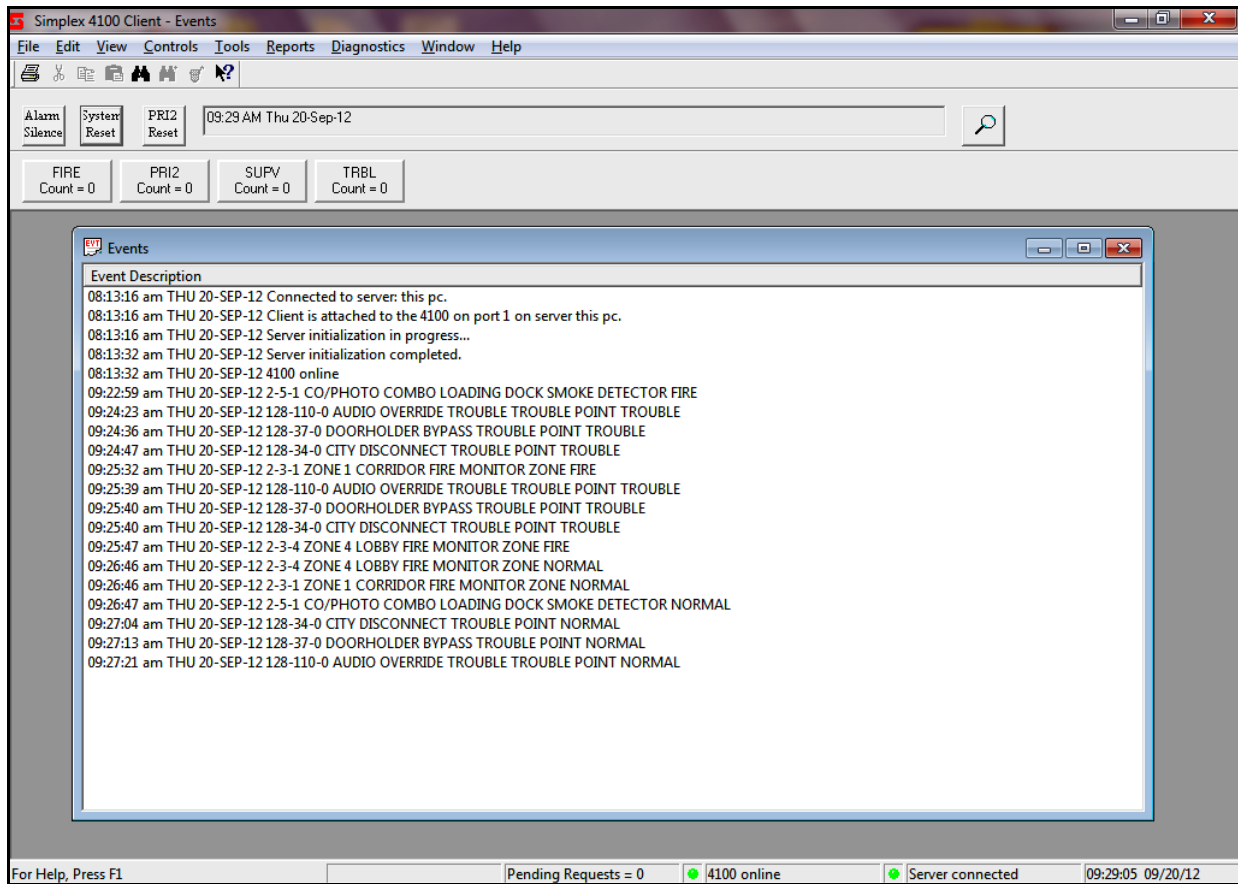
Note: Equipment may vary due to computer design changes. Contact your local Simplex product supplier for exact equipment specifications.

## Listings Requirements

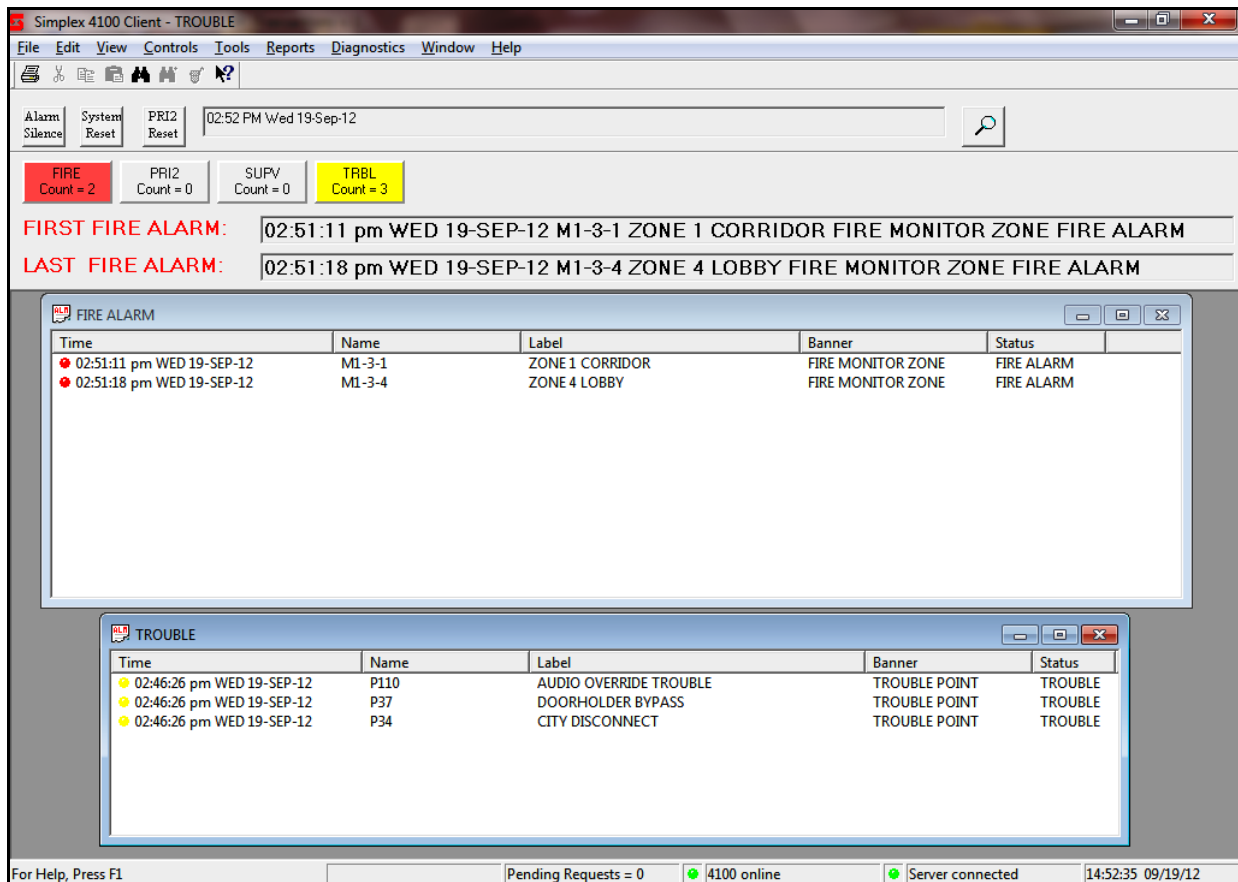
System Type	Application Software	Listings*	Software Installation*	Equipment
4190-8201 with hardware	4190-5040	UL, ULC, CSFM, FM, & MEA	As listed above*	Computer and monitor selected from above; <b>also requires 4190-6010 Transient Suppressor</b> for LAN/WAN connections per above description
4190-8602 software only	4190-5040	Not Applicable	Compatible office quality computer and monitor (refer to computer specifications reference on page 4); select computer and monitor appropriately listed for business/consumer use	

\* **NOTE: For ULC Listed applications, the Local Client provides Annunciation Only, operator actions are not available (restricted features only).**

**System Screen Details** (event window is shown reduced, it can be maximized if desired)



**Event Screen Details**



## Equipment Specifications

### Computers and Accessories (Please note that equipment and specifications may vary due to equipment design changes)

Model*	Description	Dimensions	AC Power Input*
4190-7017	Desktop Computer	16 <sup>7</sup> / <sub>8</sub> " W x 7" H x 17 <sup>5</sup> / <sub>8</sub> " D (429 mm x 178 mm x 448 mm)	2 A @ 120 VAC, 60 Hz (240 W) Operating Range: 95-132 VAC; 180-264 VAC, auto-range; 50/60 Hz
4190-7018	Rack Mount Computer	19" W x 7" H x 17 <sup>5</sup> / <sub>8</sub> " D (483 mm x 178 mm x 448 mm)	
NA	Rack Mount Keyboard Tray (included with computer)	19" W x 1 <sup>3</sup> / <sub>4</sub> " H x 12 <sup>3</sup> / <sub>4</sub> " D (483 mm x 44 mm x 324 mm)	NA

### LCD Monitors\*\* (see below and page 2 for additional details)

Model*	Description	Dimensions	AC Power Input*	Supplied Video Cables
4190-7131	21.5" Desktop	20 <sup>3</sup> / <sub>16</sub> " W x 15" H x 6 <sup>3</sup> / <sub>4</sub> " D (513 mm x 381 mm x 171 mm)	0.4 A @ 120 VAC, 60 Hz (48 W) Operating Range: 100-240 VAC, 50/60 Hz	(1) DVI and (1) SVGA, 6 ft (1.8 m) long
4190-7234	18.5" Rack Mount with Touchscreen	17 <sup>3</sup> / <sub>4</sub> " W x 11 <sup>1</sup> / <sub>16</sub> " H x 2.022" D (451 mm x 281 mm x 51.4 mm) <b>Note: Refer to page 6 for important monitor mounting details</b>	1.5 A @ 120 VAC, 60 Hz Operating Range: 100-240 VAC, 50/60 Hz	
4190-7114	42" Horizontal Wall Mount	41 <sup>5</sup> / <sub>16</sub> " W x 25 <sup>1</sup> / <sub>4</sub> " H x 5" D (1049 mm x 641 mm x 127 mm)	2.02 A @ 120 VAC, 60 Hz (243 W) Operating Range: 100-240 VAC, 50/60 Hz	(1) DVI and (1) SVGA, 15 ft (4.57 m) long

\* Computers and monitors are shipped with 120 VAC cord; NEMA 5-15P plug to IEC-320 C-13 connector. For use with other voltages, locally obtain a cord in compliance with local safety standards.

### 4190-7017 and 4190-7018 Computer Minimum Specifications Reference\*\*

Enclosure	Passive backplane with: 7 PCI slots, 2 ISA slots, and 1 CPU slot; security features: key lock reset switch; fan monitor card; locked door protecting access to the CD/DVD R/W drives and two front mounted USB ports
Computer	Compatible with Microsoft Windows 7, Windows Vista, or Windows XP 32 bit operating system, 2.8 GHz CPU with 2 GB RAM (or Core 2 Duo 2.1 GHz CPU with 4 GB RAM), 40 GB minimum hard drive; 2 Serial ports, 1 Parallel port, 4 USB ports, dual Gigabit LAN, 1 PS/2 mouse port, 1 PS2 mouse & keyboard adapter cable; SVGA video output with 16 MB VRAM, CD/DVD R/W, 101 key keyboard, PS/2 mouse, PCI and ISA slots (as required)

\*\* **PLEASE NOTE:** Simplex 4190 Series computers are Agency listed for use with PC Annunciator software. For applications where Agency listings are not required, PC Annunciator software should be compatible with most computers meeting the stated minimum specifications. However, due to computer manufacturers potentially using unique and/or proprietary drivers, hardware, or other software not tested with PC Annunciator software, there may be incompatibilities. If other computers are used, proper operation with PC Annunciator software may require technical adjustments by a qualified computer technician and would be the sole responsibility of the computer supplier and computer manufacturer.

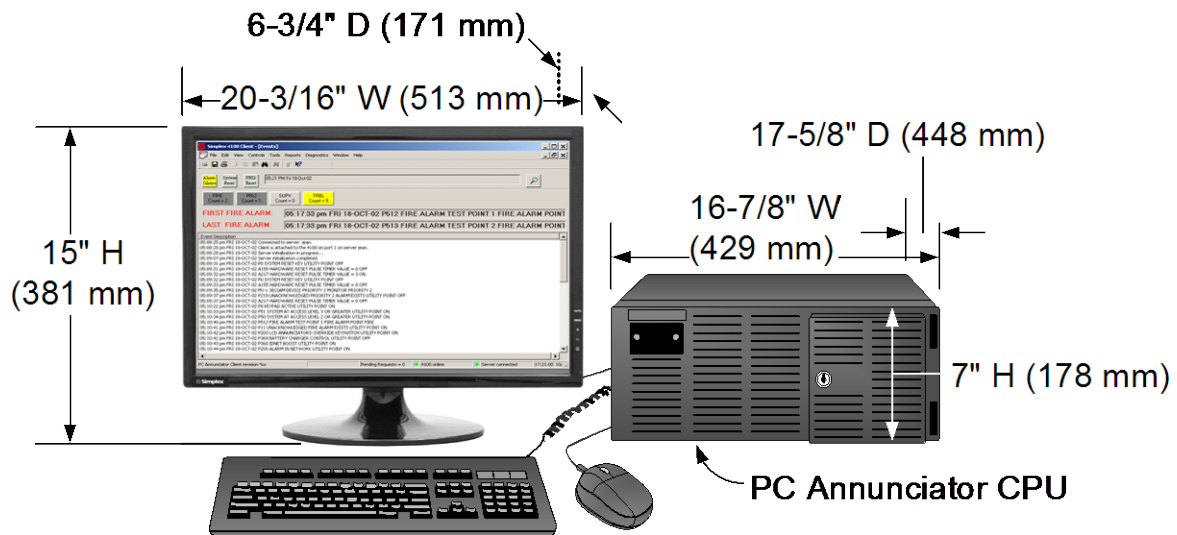
### Computer Port Reference

RS-232 Serial Ports	Two available; one is required to connect to Port B of the fire alarm control panel
USB Serial Ports	4 total; 2 in the rear (one is used for Server Security Dongle), and 2 in the front behind the locked door
Ethernet Ports	Two available; one is required for Ethernet connection to Remote Clients
Parallel Port	One available
Printable Information	Historical log reports, TrueAlarm Service Reports, and System Activity Reports
Printer Compatibility	Agency listed printer 4190-9013 is recommended (see data sheet S4190-0011); other serial or parallel port printers per operating system compatibility

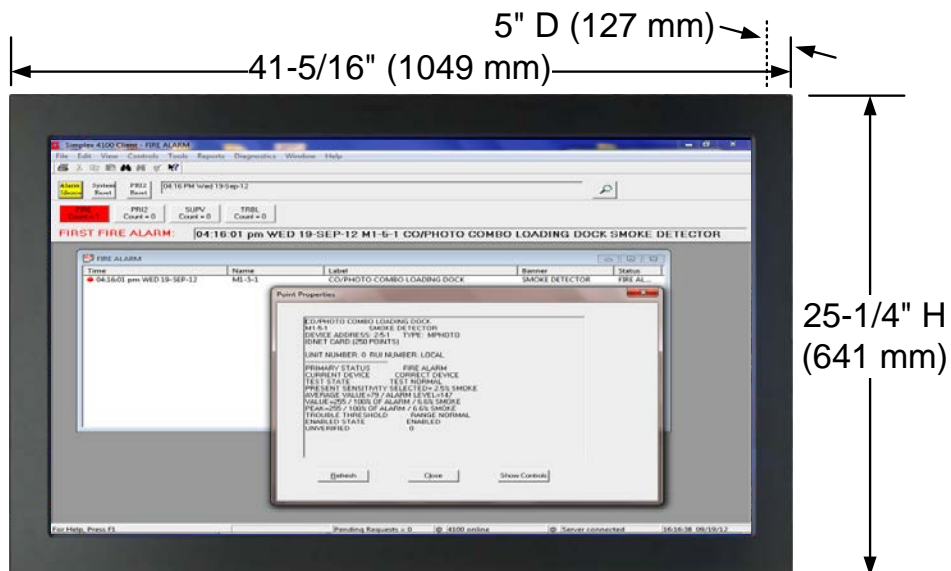
### Environmental Specifications

Operating Temperature	32° to 120° F (0° to 49° C)
Operating Humidity	up to 93% RH, non-condensing, at 90° F (32° C)

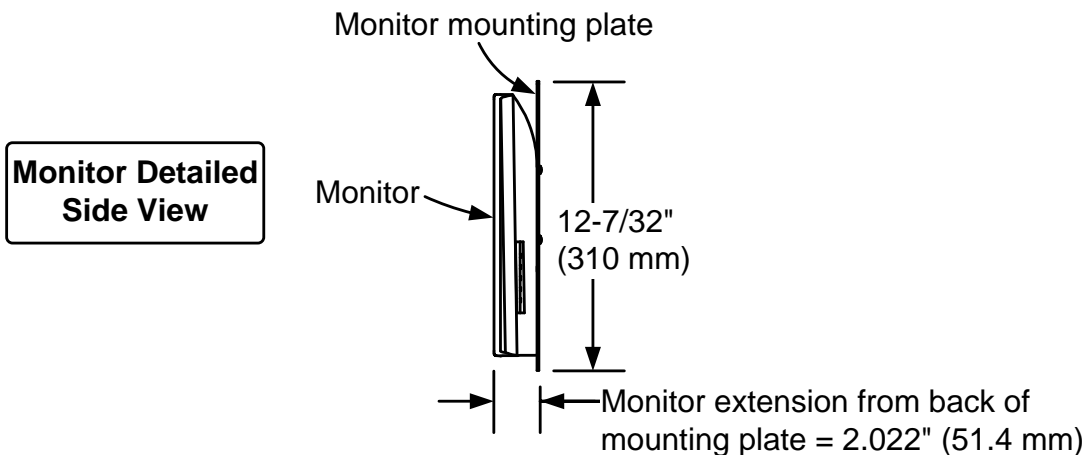
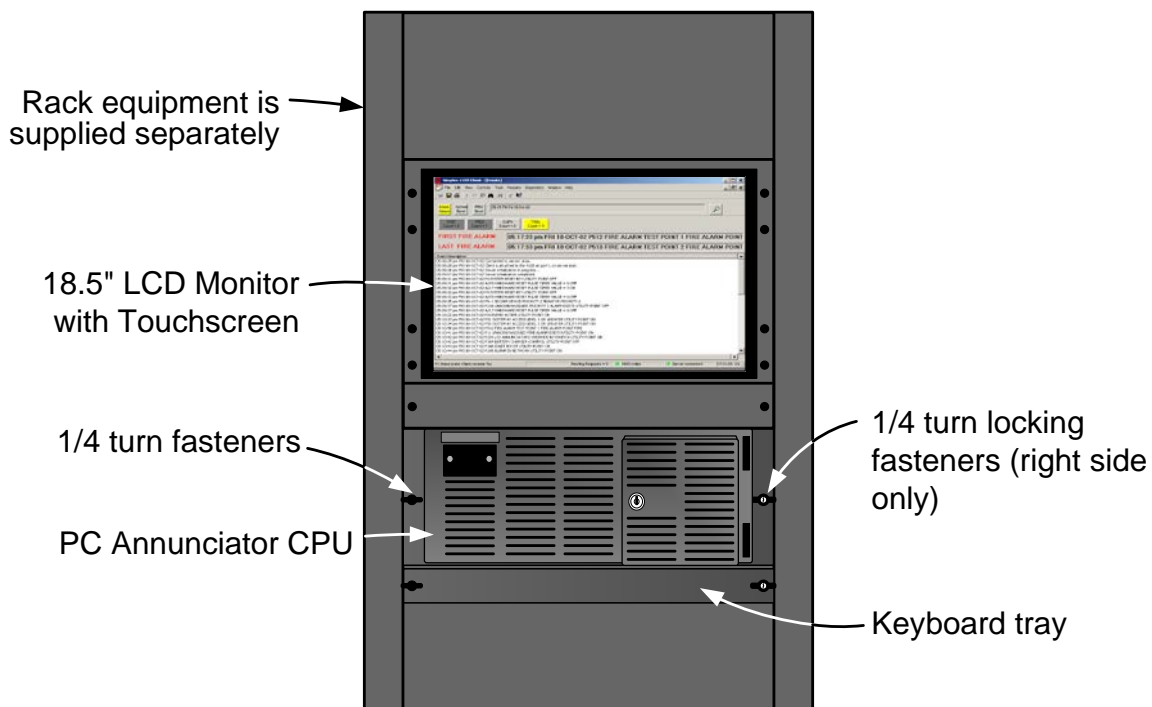
## Desktop Hardware Reference



## 42" Wall Mount Monitor Reference



## Rack Mount Hardware Reference with 18.5" Monitor



**Monitor Detailed Side View**

**NOTE:**  
 The monitor mounting plate attaches to the rack mounting rail and the monitor will extend 2.022" (51.4 mm) from the front of the mounting rail. Review the specified rack enclosure to determine actual monitor extension beyond the rack frame and to ensure that a rack door (if used) has adequate clearance.

*TYCO, SIMPLEX, and the product names listed in this material are marks and/or registered marks. Unauthorized use is strictly prohibited. Microsoft, Windows, and Vista are trademarks of Microsoft Corporation in the United States and/or other countries.*