

Features

TrueSite Workstation general features:

- **Simplex® fire alarm network connected** graphical interface control
 - **Available TCP/IP, LAN/WAN connections;** up to 20 remote clients can be connected to the server for multiple remote users; with dedicated and listed Fire Alarm LAN equipment, listed remote clients can have control access
 - **Supports standard fire service annunciation icons** to provide firefighter and first responders with critical fire response information
 - **Custom alarm and system messages** can intuitively guide emergency responders; important information (HAZMAT locations, contact information, etc.) can be quickly presented
 - **Color graphical annunciation and control** capacity for up to 100,000 points.
 - **Floatable and dockable windows** allows windows to either be fixed (docked) or floatable
 - **Quad monitor support** allows multiple active windows such as putting the Alarm List Window on one monitor and the Graphics Window on another, or run separate client/server instances on individual monitors, with up to 4 total supported monitors
 - **Pan-and-zoom features** allow precise dynamic navigation within a graphic screen for rapid and convenient selection of the area of interest
 - **Configurable coverage zones** allow user defined areas or zones within a graphics screen to be highlighted to indicate the area of activity without zooming into the point of interest
 - **Auto-jump** allows the screen view to automatically jump to a graphic at a predetermined zoom level with the active device centered on the screen; alternately, the system can be selected to auto-jump to the Alarm List window
 - **Captive or Non-Captive modes** support dedicated workstation operation (captive) or workstation operation with other Windows applications (word processing, spreadsheet, etc.) where workstation activity takes precedence (non-captive)
 - **Extensive historical logging;** up to 500,000 events with operator notations; information is spreadsheet and database compatible for report customization
 - **Optional interface to Digital Alarm Communicator Receiver (DACR)** integrates multiple systems onto a single workstation*
 - **Multiple password** controlled operator levels with selectable feature access
 - **3rd Party Interface** open-architecture solution provides enhanced information access for advanced users
 - **Available optional connections** for printers or other compatible systems
 - **Operating Systems;** Server and Clients are compatible with Windows 7 Professional or Enterprise (32-bit and 64-bit), Clients also compatible with Windows 7 Home Premium (32-bit and 64-bit)
- **TrueSite Workstation Mobile Client** allows compatible iOS and Android devices to access system information
 - **Export to XML** feature allows TrueSite Workstation data to be easily exported for report generation and customization
 - **Test Mode** allows unobtrusive testing of selective devices without nuisance interruptions at the operator workstation, events are background recorded with a visual Test Mode indicator in the historical logs
 - **Password Security** supports 8 to 16 alphanumeric passwords with configurable lockout for quantity of failed attempts
 - **Operator Notes** allows an operator to log notes associated with individual events for historical records and retrieval
 - **DACR Account Filter** allows Historical Log Reports to be filtered by DACR Account for quick access and verification of information associated with an individual account
 - **Web Browser Command Link** enables the ability to easily call up an external web page or link (web-cam, etc.) with a single command button on a graphic screen
 - **RAID 1 Support** provides a real-time “mirror” image on a secondary hard drive for enhanced life-safety workstation survivability; operation will automatically transition to the alternate drive on a drive failure without loss of operation
 - **Vector information to supervised remote clients;** select by point, event category, panel, or custom list
 - **Email generation** is available to send updates to individuals or to distribution lists with selectable content
 - **Sound files (WAV)** can be used to create custom audible status annunciation using local onboard speakers
 - **Fahrenheit or Celsius** temperatures can be displayed for screens showing heat sensor temperatures



TrueSite Workstations can Support Multiple Monitors (touchscreen monitors with expanded desktop shown)

Agency listings*:

- UL 864 & ULC-S527 as Control Unit Annunciator
- UL 864 for Fire Proprietary Supervising Station
- UL 864 UUKL as Firefighter Smoke Control Station
- UL 1076 & ULC-C1076 for Proprietary Security
- UL 1610 as Central Station Burglar Alarm Control Unit
- UL 2572, *Mass Notification Systems*, as Central Control Station (PGWM); see page 11 for details
- ULC-S559, *Equipment for Fire Signal Receiving Centres and Systems*

* Refer to page 7 for specific product listing details. CSFM Listing: 7300-0026:323. Accepted for use – City of New York Department of Buildings – MEA35-93E (does not include model 4190-8403). Additional listings may be applicable; contact your local Simplex product supplier for the latest status. Listings and approvals under Simplex Time Recorder Co. are the property of Tyco Fire Protection Products.

Features (Continued)

Graphic screens details:

- Over 30,000 custom field generated and edited graphic screen capacity is available
- Multiple import and export formats are supported (refer to page 4 for details)

Additional Fire Alarm Network capabilities:

- Multiple workstations can be nodes on the same fire alarm network to provide redundant operations for improved survivability
- Connect to up to seven (7) separate network loops
- Graphical diagnostic tools identify network node and loop status
- Set-host service functions allow access to remote network node data including individual TrueAlarm analog sensors
- Provides event printing (with compatible printer), view or print of status and service report information, and print graphic screens (see page 9 for printing details)
- Compatible with IMS (Information Management Systems) and GCC (Graphic Command Center) on the same fire alarm network
- 2120 Multiplex Serial Line Interface (SLI) allows connection to up to eight, 2120 Multiplex systems

Selectable computer and monitor options:

- Computers are available as desktop or rack mount with mouse operation and/or touchscreen operation providing convenient user interface
- Desktop LCD widescreen, high resolution LED backlit monitors are 22 inch class, 21.5 inch (546 mm) diagonal, provide 1920 x 1080 resolution, and are available with or without touchscreen
- Wall mount LCD widescreen, high resolution monitors are 42 inch (1067 mm) diagonal, provide 1920 x 1200 resolution, and are available with or without touchscreen
- Rack mount LCD high resolution monitors are 19 inch class 18.5" (470 mm) diagonal with touchscreen and provide 1366 x 768 resolution; **Note: Refer to page 12 for important monitor mounting details**

Description

Network Annunciation. TrueSite Workstations provide annunciation, status display, and control for Simplex Fire Alarm Networks using a personal computer based graphical interface with a high resolution, color display. Response buttons with realistic icons provide control switches specific to the operation being performed.

Remote Clients. For remote viewing of TrueSite Workstation Server information, remote clients are available and connected using TCP/IP LAN/WAN Ethernet communications. As detailed on pages 7 and 10, Remote Clients can be annunciation only, or capable of system control when configured with agency listed hardware.

DACR Compatible. For systems requiring information from remote control panels via DACTs (Digital Alarm Communicator Transmitters), workstations can be equipped to communicate directly with a compatible DACR; refer to page 6 for details.

Product Image Reference

Note: Graphics not to scale



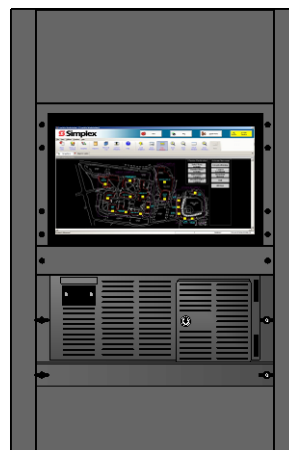
21.5" Desktop Monitor with a sample Emergency Communications Control Screen (4190-4014)



42" Wall Mount Monitor



Desktop PC



Rackmount PC and Monitor

TrueSite Workstation Operation

Operation. When fire alarm network status changes occur, the screen displays the type and location of the alarm (or other activity) and the appropriate header buttons appear. In the historical log screen below in Figure 1, Fire, Priority 2, Supervisory, and Trouble buttons are shown with an active Trouble indicated.

Sample Screens. Figure 1 (below) is representative of historical log screen detail. Figure 2 (on page 4) is representative of a system graphic screen with icons representing the devices of interest. Screen choices can be configured per system preference. However, when using multiple optional monitors, multiple windows can be visible simultaneously for operator convenience.

Ease of Operation. With touchscreen monitors, the operator touches the screen area in alarm (or uses the mouse control) to access a more detailed view of the alarmed zone or device. With the proper password access, the operator has the ability to acknowledge alarm and trouble conditions, activate signal silence, and perform system reset directly from the workstation screens.

Programmable Activity Timeout allows an unattended monitor to revert to the login screen when the configured time period expires.

Individual User Preferences appear when the user logs in. Options include: Font Size (default or large); Toolbar Size (small or large); Interface Theme (MS Office 2003 or System); Floating Window Options (select whether to show Menu bar or show Tool bar).

Historical Log and List Details. Figure 1 below shows historical log details. The display format is similar to the display for active list items such as the alarm list. Displayed information can be sorted on-screen by each category shown (number, time, date, point name, etc.). List information can be reviewed on the screen, printed at a local or remote system printer, or can be written to an electronic file for compatibility with spreadsheet and database programs.

Customized Response. Custom alarm and trouble messages can be added and field edited to provide operator response assistance. Point specific information, such as hazardous material storage and lists of people to notify, can be automatically or selectively displayed.

Number	Time	Date	Point Name	Node Name	Description	Detail	Status	Operator	Notes
733	09:20:24	WED 19-MAR-14	P412	(NODE 3) Central TSW	REM CLIENT MISSING: Troubles	TROUBLE POINT	ABNORMAL		
734	09:20:24	WED 19-MAR-14	P38	(NODE 3) Central TSW	USB UL CARD MISSING/FADED	TROUBLE POINT	ABNORMAL		
735	09:20:26	WED 19-MAR-14	P78	(NODE 3) Central TSW	3RD CLIENT MISSING: foo	TROUBLE POINT	ABNORMAL		
736	09:21:33	WED 19-MAR-14	P238	(NODE 3) Central TSW	NETWORK INITIALIZATION IN PROGRESS	TROUBLE POINT	ABNORMAL		
737	09:23:30	WED 19-MAR-14	2:1	(NODE 2) West Building	COMMON TROUBLE POINT FOR NODE: 2	SYSTEM PSEUDO STATUS	TROUBLE		
738	09:23:30	WED 19-MAR-14	2:1	(NODE 2) West Building	COMMON TROUBLE POINT FOR NODE: 2	CARD TROUBLE STATUS	TROUBLE		
739	08:21:34	WED 19-MAR-14	P238	(NODE 3) Central TSW	NETWORK INITIALIZATION IN PROGRESS	TROUBLE POINT	ABNORMAL		
740	09:23:30	WED 19-MAR-14	2:M1-1-6	(NODE 2) West Building	FLOOR 6 ROOM 1061	PULL STATION	FIRE ALARM		
741	09:23:30	WED 19-MAR-14	2:53G3	(NODE 2) West Building	SIGNAL CARD 1 CIRCUIT 52G3	SIGNAL CIRCUIT	ON		
742	09:23:30	WED 19-MAR-14	2:M1-4-0	(NODE 2) West Building	DIAL A HEAD	SMOKE DETECTOR	NO ANSWER		
743	09:23:30	WED 19-MAR-14	2:M1-2-0	(NODE 2) West Building	2:M1-2-0 HIZER	HEAT DETECTOR	NO ANSWER		
744	09:21:33	WED 19-MAR-14	2:1	(NODE 2) West Building	COMMON TROUBLE POINT FOR NODE: 2	SYSTEM PSEUDO STATUS	TROUBLE		
745	09:30:21	WED 19-MAR-14		(NODE 3) Central TSW	LOGIN AT LEVEL 6			OPERATOR # 006	
746	08:30:21	WED 19-MAR-14		(NODE 3) Central TSW	The email service was disabled			OPERATOR: OPERATOR6	TSW Email Service
747	09:30:21	WED 19-MAR-14	P504	(NODE 3) Central TSW	EMAIL SERVICE DISABLED BY USER	TROUBLE POINT	ABNORMAL		
748	09:30:22	WED 19-MAR-14		(NODE 3) Central TSW	TROUBLE GLOBAL ACKNOWLEDGE REQUEST				
749	09:30:23	WED 19-MAR-14		(NODE 3) Central TSW	TROUBLE GLOBAL ACKNOWLEDGE				
750	09:30:23	WED 19-MAR-14		(NODE 3) Central TSW	TROUBLE GLOBAL ACKNOWLEDGE				
751	09:30:26	WED 19-MAR-14	2:1	(NODE 2) West Building	COMMON TROUBLE POINT FOR NODE: 2	SYSTEM PSEUDO STATUS	TROUBLE		
752	09:30:26	WED 19-MAR-14	2:1	(NODE 2) West Building	COMMON TROUBLE POINT FOR NODE: 2	SYSTEM PSEUDO STATUS	TROUBLE		
753	09:30:37	WED 19-MAR-14		(NODE 3) Central TSW	ALARM GLOBAL ACKNOWLEDGE REQUEST				
754	09:30:38	WED 19-MAR-14		(NODE 3) Central TSW	ALARM GLOBAL ACKNOWLEDGE				
755	09:30:41	WED 19-MAR-14		(NODE 3) Central TSW	SIGNAL SILENCE REQUESTED				
756	09:30:41	WED 19-MAR-14	P97	(NODE 3) Central TSW	SIGNAL SILENCE REQUEST	UTILITY POINT	ON		
757	09:30:41	WED 19-MAR-14			ALARM SILENCE REQUESTED				
758	09:30:41	WED 19-MAR-14			ALARM SILENCE IN PROGRESS				
759	09:30:41	WED 19-MAR-14	P97	(NODE 3) Central TSW	SIGNAL SILENCE REQUEST	UTILITY POINT	OFF		
760	08:30:53	WED 19-MAR-14	2:53G3	(NODE 2) West Building	SIGNAL CARD 1 CIRCUIT 52G3	SIGNAL CIRCUIT	OFF		
761	09:30:57	WED 19-MAR-14		(NODE 3) Central TSW	SYSTEM RESET REQUESTED				
762	09:30:57	WED 19-MAR-14	P96	(NODE 3) Central TSW	SYSTEM RESET REQUEST	UTILITY POINT	ON		
763	09:30:57	WED 19-MAR-14			FIRE SYSTEM RESET REQUESTED				
764	09:30:57	WED 19-MAR-14			FIRE SYSTEM RESET IN PROGRESS				
765	09:30:57	WED 19-MAR-14	P96	(NODE 3) Central TSW	SYSTEM RESET REQUEST	UTILITY POINT	OFF		
766	09:30:56	WED 19-MAR-14	2:9212	(NODE 2) West Building	DETECTOR/SYSTEM RESET	UTILITY POINT	ON		
767	09:31:27	WED 19-MAR-14			FIRE ALARMS PRESENT, SYSTEM RESET INCOMPLETE				

Figure 1. TrueSite Workstation Sample Historical Log Screen

Password Control

Multiple Access Levels. Operator access level is determined during log-in. Select functional access to match the training and responsibility of the operator. Operators with additional TrueSite Workstation and fire alarm network training may be qualified for access to sensitive areas. For operators who are primarily concerned with immediate facility security, a lower level access will provide the information necessary for proper response but will not allow access to key parameters that determine overall system/network operation.

Graphics Screens

Site and Floor Plan Details. Graphics screens can provide easily recognizable site plan and floor plan information. The level of detail can be customized for the specific facility to easily and accurately direct the operator to the immediate area of interest.

Graphic Screen Controls. The graphics portion of the screen below is shown as a main screen but could be set to float and be moved to another monitor if desired. Icons can be added to identify the location and type of the device of interest and the graphics control toolbar (located at the top of the graphic) can be used to pan and zoom for more precise detail. Programmable coverage zones can be added with selectable area and zoom level. A fixed area site plan (key plan) with action buttons and screen locator can be added as shown below. Pan and zoom are tracked by a green rectangle in the key plan.

Graphics Screens (Continued)

Custom Banner and Main Screen Background. The banner area shown with a Simplex logo in Figure 1 can be customized (bitmap area is 2250 x 68 pixels). The main screen background (viewable prior to login) can be customized with a bitmap of up to 1000 x 525 pixels.

Action Messages. In addition to screen text or graphic information, the operator can be presented with specific action messages that provide emergency response information and directions. These action messages are easily field edited for local requirements. The appropriate action message in the screen below would be located in the Acknowledge dialog box.

Auto-Jump to Graphics or Alarm List. Select whether activity should cause a jump to a list format or to the associated graphic screen.

Supported Graphics Formats:

- DWG Import Formats: AutoCAD R9, 10, 11-12, 13, 14, 2000-2002, 2004-2006, 2007-2009, 2010-2011
- DXF Import Formats: AutoCAD R14 and 2000
- Export Formats: AutoCAD 2000 DWG/DXF format (allows editing in AutoCAD 2000 or later)
- Import drawing files: DWG, WGS, IMS/GCC DOC files, WMF, BMP, GIF, and JPG

Individual Point Service Access

Qualified Operator Detail Access. The workstation operator's interface provides service level access to network information that is not normally "public." Network "private" point information can be accessed using the Set-Host feature, and logging into the database of the network and node of interest. With this operation, individual point information can be accessed and controlled as required by qualified service personnel with proper password access.

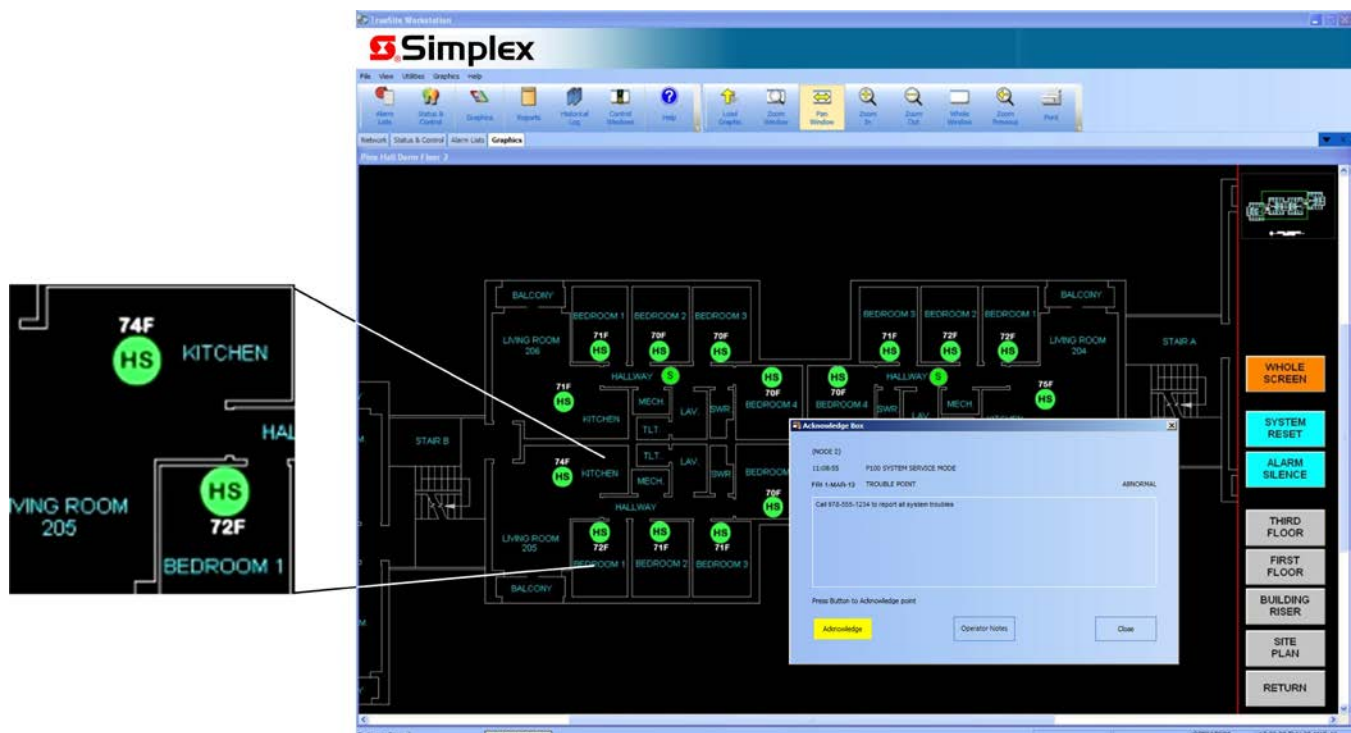


Figure 2. TrueSite Workstation Sample Graphic Screen with Detail Enlargement and Acknowledge Box
(Note: This sample graphic screen demonstrates heat sensors (HS) dynamically displaying their local temperature readings)

Network Diagnostics

Graphical Network Status Views. Automatic, built-in diagnostics are available to provide graphical views of Network topology and Network status. Missing communications links due to wiring breaks or shorts as well as inactive network nodes are indicated clearly to guide in returning the system to normal. Information screens are available to provide detail about each specific network node. Network level functions such as timekeeper node and monitor node are indicated as well as identification of the node being used for the diagnostic.

Multiple Network Connections

When extensive network expansion or interconnection of existing, separate networks is required, up to seven (7) network loops may be connected to the TrueSite Workstation. Each network loop is connected to its own network interface module allowing the workstation to appear as a node in each individual loop.

With a multi-loop network connection, the TrueSite Workstation is a node member of each network loop with up to 98 additional nodes per loop. This allows up to 686 total nodes and the TrueSite Workstation Server (687 total) to be interconnected.

Multi-Loop Operation Features

Improved survivability:

- Individual network loops operate independently
- In the event of loss of one or more loops, remaining loops continue to operate

Loop independence:

- Loops can operate at different data rates to satisfy individual conditions (9600 or 57,600 bps, selectable per loop)
- New loops can be added without impacting existing loops

Assists with phased-in system expansion:

- Each loop can be installed as a stand-alone network allowing local node programming to evolve as required
- When construction or renovation reaches completion, loops can be combined for coordinated facility protection

TrueSite Workstation hardware requirements:

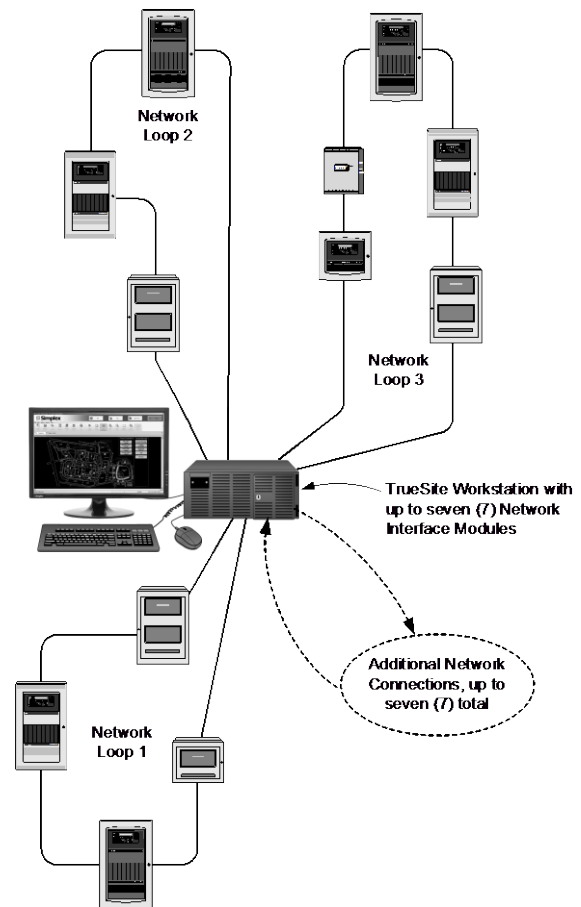
- Each loop requires a dedicated Network Interface Card with two media modules
- A maximum of 7 Network Interface Cards are allowed per workstation

Version Compatibility*

Compatibility with TrueSite Workstations requires the 4100ES, 4010ES, or other panels per the following software versions.

Fire Alarm Network Interface	
4190 GCC/IMS/NPU	Master Version 2.07 (or later)
4100U	Master Version 11.03 (or later)
4100	Master Version 9.02 (or later)
4020	Master Version 9.02 (or later)
4010	Master Version 3.01 (or later)
4002	Network Firmware Version 3.02.92 (or later)
2120 (SLI) Interface	
2120	Master Version 5.44 (or later) Network Interface Version 3.02 (or later)

* TSW 100,000 point capacity applies to ES series panels or DACR points only. Other legacy 4000 series panels are limited to a capacity of 62,500 points on the TSW (can be mixed with ES series panels reporting above the 62,500 point range). A TSW with a 2120 SLI interface is limited to 62,500 points for the entire system (including ES series panels and DACR points). TSW 100,000 point capacity requires TSW Version 3.04 (or higher) and ES Panels at Version 3.03.04 (or higher).



Typical Interface of Multiple Network Loops Using a TrueSite Workstation Server

DACR Interface

DACR Support. For control panels that are not network compatible or may be too remote for a network connection, the TrueSite Workstation can communicate to a compatible DACR (Digital Alarm Communicator Receiver) via an RS-232 port (requires DACR Interface software option 4190-5060, see compatibility list below). Remote control panels equipped with DACTs communicate their local event status (or individual point status if capable) to the DACR using dial-up telephone and optional TCP/IP connections. The DACR forwards the individual panel status to the workstation for information processing and history logging.

Compatible DACRs. Compatibility includes:

- Bosch Model D6600*, D6100i, and D6100IPv6
- Sur-Gard Model System I, II, III, and IV
- AES Intellinet 7705i Wireless-to-Internet receiver
- Sur-Gard Model MLR2-DG (legacy product)

* Note: For UL 864 listed Fire Proprietary Supervising Station Operation that uses a DACR, select the Bosch D6600 with CID format and 4190-8403 (see page 7).

DACR Events. The TrueSite Workstation handles DACR points as though they were network points. Graphics can be displayed and point status changes can be easily acknowledged. Point acknowledgement occurs locally on the workstation since communications between the DACT and DACR are from DACT to DACR only. Remote panels need to be Acknowledged, Silenced, or Reset at the individual panel. Point events are entered into the workstation history log as part of its 500,000 event storage capacity.

Supported DACR/DACT Formats. Compatible DACRs support standard reporting formats including: ADEMCO CID (Contact ID format), **SIA Level 1, BFSK; and 3/1 and 4/2.** A CID account can be configured on the TrueSite Workstation to be either panel event reporting or with individual point reporting. The other formats provide panel event reporting only.

TrueSite Workstation Points for DACR Accounts.

Workstation points are associated with a DACR account number. Standard event points have up to a 19 character label for each point. CID point reporting has up to a 40 character label. DACR event categories include: **Fire Alarm, Priority 2 Alarm, Supervisory Alarm, Trouble, Utility Status, and Unknown Point** (CID format only). An occurrence of these events will be prefixed with the 19 character account label.

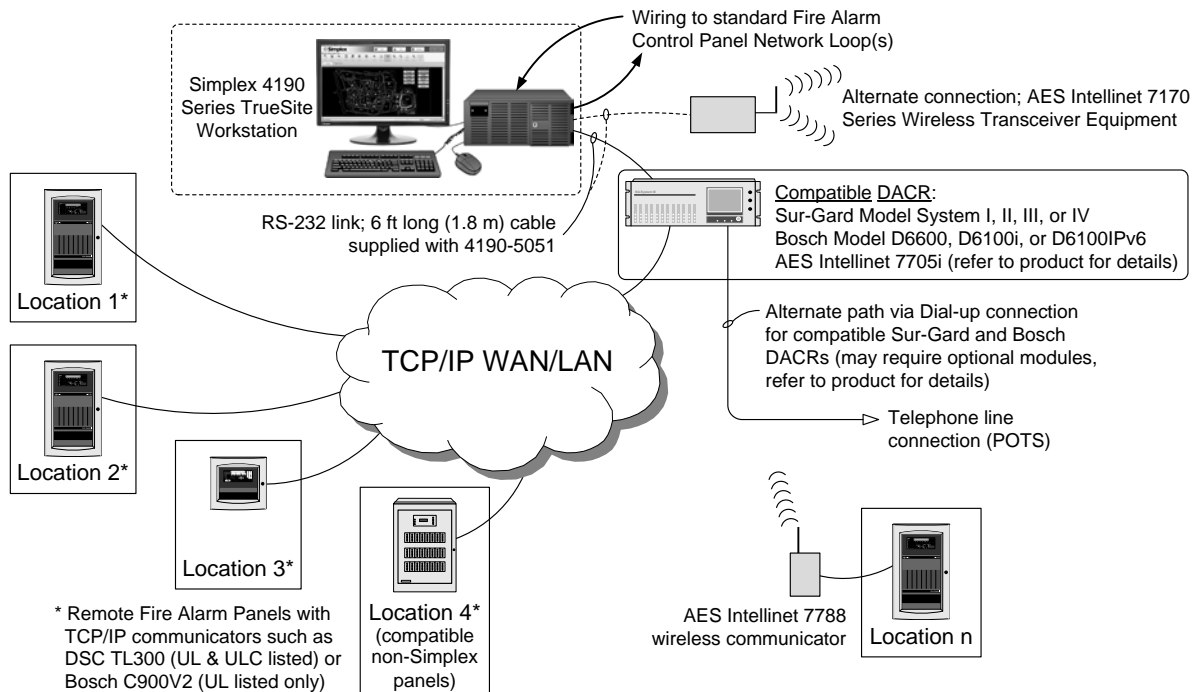
Public Points. The Workstation can be selected to make DACR associated points public to the fire alarm network for monitoring by other network nodes if required.

DACR Status Tracking. The DACR connection to the workstation is supervised with the following trouble conditions tracked by the workstation: **Communications Loss**, (between DACR and workstation), **Initialization Failed** (the workstation to DACR connection did not successfully establish), **Unknown DACR Message**, (the DACR sent a message that was not understood by the workstation), and **Unknown DACR Account** (the account information received does not correlate to an workstation point).

Supervision of DACTs. The workstation is programmed to expect and log periodic supervisory transmissions from the DACTs via the DACR. Failure to receive a supervisory transmission will cause a trouble event on the TrueSite Workstation.

Event Restoration. When the workstation receives an event restoration from the DACR, it restores that point's status record to normal. The workstation has the ability to manually restore a point to normal in the event that a restoration occurred that was not forwarded to the workstation.

DACR Interface Reference Diagram



Product Selection

Category	Model	Description			
Hardware Systems (select as required) Note: LAN/WAN connections require use of Transient Suppressor 4190-6010, see page 8 for details	4190-8401	TrueSite Workstation with control capability; requires selection of computer, monitor, and software from list below Listings: For use as a Workstation Annunciator under: UL 864 & ULC-S527, Fire Alarm Control; UL 1076, Proprietary Burglar Alarm; UL 1610 Central Station Burglar Alarm			
	4190-8403	TrueSite Workstation with control capability; includes bracket for securing AC input wiring; requires selection of computer, monitor, and software from list below Listings: UL 864 as Fire Proprietary Supervising Station and ULC-S559, Proprietary Fire Signal Receiving Equipment , requires direct wired AC Power and UPS secondary power source per applicable local code; reports and logs events; if an optional event printer is also desired, see page 9 for printer information; if using a DACR for UL 864 listing, select the Bosch D6600 with CID format; for ULCC-S559, see page 6 for compatible DACRs) UL 864, UUKL Firefighter Smoke Control Station ; UL 1076, Proprietary Burglar Alarm Multiplex Receiving Unit ; UL 1610, Central Station Burglar Alarm Control Unit and ULC-C1076, Proprietary Burglar Alarm Central Station Control Unit with listed DACR (see page 6 for compatibility)			
	4190-8410	TrueSite Workstation Remote Client ; requires selection of computer, monitor, and software from list below; agency listed control capability requires connection to a dedicated Fire Alarm LAN (refer to data sheet S4190-0018) Listings: UL 864 & ULC-S527, Remote Client Annunciator			
Software Only and Aftermarket Additions	4190-8603	TrueSite Workstation Software Only package, refer to page 9 for computer specifications reference (listings and approvals are not applicable); [NOTE: Windows operating system is not provided. For software only packages purchase operating system locally as required.]			
	4190-8901	Aftermarket <i>hardware</i> addition			
	4190-8605	Aftermarket <i>software</i> addition			
Computer Type (select one as required)	4190-7015	Desktop	Computer with Intel i7, 2.10 GHz CPU, 6MB Cache, 4GB RAM, (2) 1TB Hard Drives (minimum) with RAID 1 Controller, USB ULIO card, DVD R/W, integral audio and amplified speakers, onboard video for up to two displays (1) SVGA and (1) DVI, (2) RS-232 Serial ports, (6) USB ports, (1) PS/2 port, (2) Gigabit LAN ports, Passive backplane with (8) PCI, (3) PCIe x 1 and (1) PCIe x 16 slot, USB keyboard, mouse; USB to PS/2 adapter; charcoal grey housing; Computers are pre-installed with Windows 7 Professional 32 bit (includes CD and license) and with TrueSite Workstation software.		
	4190-7016	Rack Mount			
LCD Color Monitor		Model	Size (Diagonal)	Description	
	Monitor Only	4190-7131	21.5" (546 mm)	LCD Monitor for desktop applications	Select one minimum, four maximum, as required per computer choice; connect as SVGA or DVI, both cables are included; touchscreen models include separate serial controller cable; black/charcoal grey housings; for 3 or 4 monitors select 4190-6038 (32-bit OS) or 4190-6039 (64 bit OS) Dual Video Card as required (see below)
		4190-7114	42" (1049 mm)	LCD Monitor for horizontal wall mount applications	
	Monitor with Touch-screen	4190-7233	21.5" (546 mm)	Desktop	
		4190-7234	18.5" (470 mm)	Rack Mount (see page 12)	
		4190-7214	42" (1049 mm)	Wall Mount	
Applications Software (select one per application)		Model	Description		
		4190-5050	TrueSite Workstation Server Software, includes: License, Security Dongle, Documentation; requires 4190-8401, 4190-8403, or 4190-8603		
		4190-5053	TrueSite Remote Client Installation CD, no operating system; requires 4190-8410 or 4190-8605		
Server Feature Options	4190-5060	DACR Interface for a TrueSite Workstation Server			
	4190-5064	3rd Party Interface Software Package ; includes: (1) 3rd Party Interface Development Software; (2) A dedicated Security Certificate allowing server and client access for one 3rd Party Interface Application; and (3) A 3rd Party Feature Code allowing one 3rd Party Client connection to a single TrueSite Workstation; Note: A 579-1155 <i>Software Customer Information Form</i> is required to be submitted with the order			
	4190-5065	TrueSite Workstation Feature Upgrade ; includes the latest TrueSite Workstation software version and an Upgrade Feature Code to enable <i>new standard features</i> (new optional features are selected separately); without this upgrade, installing the latest software version provides updated performance improvements over previous versions but does not include new standard software features			
	4190-5067	TrueSite Workstation Mobile Client Feature ; quantity of one (1) enables TrueSite Workstation information to be accessed from compatible mobile devices; access for mobile clients is enabled by entering an authorized feature code at the server; see data sheet S4190-0024 for more information			
Remote Client Type Selection (Select <u>One Per</u> Remote Client)	4190-5061	Feature code for Remote Client with restricted features (reduced feature set)			
	4190-5062	Feature code for Remote Client with password protected feature access			
	4190-5066	3rd Party Interface Client for adding additional 3rd Party Client connections to an existing TrueSite Workstation 3rd Party Interface; includes a 3rd Party Client Feature Code for the selected quantity of concurrent 3rd Party Client Connections to a single TrueSite Workstation (maximum of five (5) per server) Note 1: When adding 3rd Party Interface Clients to more than one TrueSite Workstation Server, each server requires its own 4190-5066 Remote Client Selection; if a new 3rd Party Interface Application is being developed, feature code 4190-5064 will be required to provide a unique Security Certificate. Note 2: A 579-1155 <i>Software Customer Information Form</i> is required to be submitted with the order.			

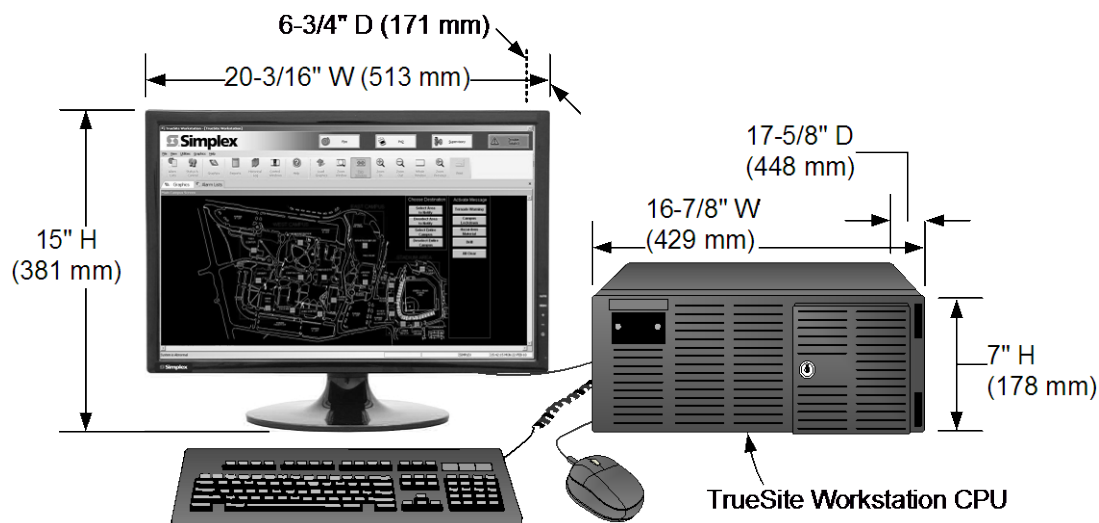
Please note that equipment and specifications may vary due to equipment design changes.

(continued on next page)

Product Selection (Continued)

Internal Hardware Options (select as required)	Model	Description		
	4190-6034	Quad RS-232 Serial Port Card, select when more than two serial ports are required; may be needed for 2120 SLI connections; PCI Slot card with pluggable terminal block output; up to 2 maximum; one 4190-6026 suppressor is require per connection (see below)		
	4190-6038	Dual Video Card for 32 Bit Operating System, PCI Slot, 1 DVI and 1 VGA output, select two for support of 3 or 4 monitors; Note: Dual monitor support is standard; for 3 or 4 monitors, disable onboard video drive and use two 4190-6038 cards		
	4190-6039	Dual Video Card for 64 Bit Operating System, PCIe x 16 Slot, 2 DVI outputs; select one for support of 3 or 4 monitors; Note: Dual monitor support is standard; onboard video is used for first two monitors, use optional 4190-6039 video card for monitors 3 and 4		
Transient Suppressed Connectors (select as required)	4190-6002	Transient Protected Connector, select one per connection to a standard RS-232 serial port		
	4190-6026	Transient Protected Connector for Quad Serial Port Card; one required per connection		
	4190-6010	Transient Suppressor for LAN/WAN Connection; required for agency listing for each TrueSite Workstation Server and Remote Client LAN/WAN connection, except for server to client connections when both are in the same room ; refer to diagram on page 10		
Upgrade to DACR	4190-9807	Upgrade standard TrueSite Workstation (<i>with Version 1.x software</i>) or Information Management System (IMS), to add DACR capability; includes USB style Security Dongle (requires an available USB port); Note: Use 4190-5060 for Version 2 (or later) systems		
Network Interface Modules (seven (7) maximum)	Configured	Aftermarket	Description	
	4190-6061	4190-9829	Modular Network Interface (select Media Modules separately, listed below); PCI Slot card	
Media Modules for Modular Network Interface (as required)	4190-6036	4190-9822	Wired Media	Select one per input and one per output media type, per Modular Network Interface; mounts onto Modular Network Interface (see above)
	4190-6037	4190-9823	Fiber Optic Media	
System Upgrades (select as required)	Model	Description		
	4190-9814	Hardware upgrade to migrate from Windows XP to Windows 7 operation for computer identification 51-TSP12-969 only; includes 1 GB RAM, cable, reset switch, and mounting bracket (mounting bracket replaces existing floppy disc drive cover plate)		
Programming (select)	4190-8122	TrueSite Workstation Programming; select Programming Items below		
Programming Items (select items per system requirements; select quantity of items as required) requires selection of 4190-8122	4190-4006	AutoCAD DXF or DWG file, one floor plan (multiple floor plans require dedicated files)		
	4190-4008	25 Custom Action Messages		
	4190-4009	25 Travel Screen Keys (selective zooming)		
	4190-4010	25 Status Icons		
	4190-4011	25 Control Functions; On/Off, Bypass, etc.		
	4190-4012	Convert one (1) Existing IMS Screens to TrueSite Workstation Screen		
	4190-4013	10 Coverage Zones; order quantity as required		
	4190-4014	One (1) Emergency Communications/Mass Notification Control Screen (see screen on page 2)		

Hardware Reference with 21.5" Desktop Monitor



TrueSite Workstation Equipment Specifications

Computers and Accessories (Please note that equipment and specifications may vary due to equipment design changes)

Model*	Description	Dimensions	AC Power Input*
4190-7015	Desktop Computer	16 ⁷ / ₈ " W x 7" H x 17 ⁵ / ₈ " D (429 mm x 178 mm x 448 mm)	2 A @ 120 VAC, 60 Hz (240 W) Operating Range: 95-132 VAC; 180-264 VAC, auto-range; 50/60 Hz
4190-7016	Rack Mount Computer	19" W x 7" H x 17 ⁵ / ₈ " D (483 mm x 178 mm x 448 mm)	
NA	Rack Mount Keyboard Tray (included with computer)	19" W x 1 ³ / ₄ " H x 12 ³ / ₄ " D (483 mm x 44 mm x 324 mm)	NA

LCD Monitors (Please note that equipment and specifications may vary due to equipment design changes)

Model*	Description	Dimensions	AC Power Input*	Supplied Video Cables
4190-7131	21.5" Desktop	20 ³ / ₁₆ " W x 15" H x 6 ³ / ₄ " D (513 mm x 381 mm x 171 mm)	0.4 A @ 120 VAC, 60 Hz (48 W) Operating Range: 100-240 VAC, 50/60 Hz	(1) DVI and (1) SVGA, 6 ft (1.8 m) long
4190-7233	21.5" Desktop with Touchscreen	20 ³ / ₁₆ " W x 15" H x 8 ¹¹ / ₁₆ " D (513 mm x 381 mm x 221 mm)		
4190-7234	18.5" Rack Mount with Touchscreen	17 ³ / ₄ " W x 11 ¹ / ₁₆ " H x 2.022" D (451 mm x 281 mm x 51.4 mm) Note: Refer to page 12 for important monitor mounting details	1.5 A @ 120 VAC, 60 Hz Operating Range: 100-240 VAC, 50/60 Hz	
4190-7114	42" Wall Mount	41 ⁵ / ₁₆ " W x 25 ¹ / ₄ " H x 5" D (1049 mm x 641 mm x 127 mm)	2.02 A @ 120 VAC, 60 Hz (243 W) Operating Range: 100-240 VAC, 50/60 Hz	(1) DVI and (1) SVGA, 15 ft (4.57 m) long
4190-7214	42" Wall Mount with Touchscreen			

* **Note: Products are Agency listed for 120 VAC.** Computers and monitors are shipped with 120 VAC cord; NEMA 5-15P plug to IEC-320 C-13 connector. For use with other voltages, locally obtain a cord in compliance with local safety standards.

Computer Minimum Specifications Reference**

Server Enclosure**	Passive backplane with: 7 PCI slots and 1 CPU slot; security features: key lock reset switch; fan monitor card; locked door protecting access to the CD/DVD R/W drives and one front mounted USB port
Server Computer**	Microsoft Windows 7 Professional or Windows 7 Enterprise operating system (32 or 64-bit); Intel i7 2.1 GHz CPU, or Core 2 Duo 2.1 GHz CPU, 4 GB RAM, 160 GB minimum hard drive; 2 Serial ports, 1 Parallel port, 2 USB ports, dual Gigabit LAN ports, mouse and keyboard ports; SVGA video output with 16 MB VRAM, CD/DVD Drive, 101 keyboard, mouse, PCI and ISA slots (as required), integral audio and amplified speakers
Remote Client	Remote Client specifications are similar to server except; also compatible with Microsoft Windows 7 Home Premium operating system (32-bit or 64-bit); Core 2 Duo CPU minimum, 4 GB RAM minimum; single Gigabit LAN, 160 GB hard drive, SVGA video output with 16 MB VRAM, CD/DVD Drive, other ports as required (e.g. USB, Serial RS-232, Parallel, mouse and keyboard, etc.)

** **PLEASE NOTE:** Simplex 4190 Series computers are Agency listed for use with TrueSite Workstation software. For applications where Agency listings are not required, TrueSite Workstation software should be compatible with most computers meeting the stated minimum specifications. However, due to computer manufacturers potentially using unique and/or proprietary drivers, hardware, or other software not tested with TrueSite Workstation software, there may be incompatibilities. If other computers are used, proper operation with TrueSite Workstation software may require technical adjustments by a qualified computer technician and would be the sole responsibility of the computer supplier and computer manufacturer.

Computer Port Reference (4190-7015 and 4190-7016)

RS-232 Serial Ports	Two standard, up to 9 total with optional 4190-6034 Quad Serial Port Card
USB Serial Ports	3 total; 2 in the rear (one is used for Server Security Dongle), and 1 in the front behind the locked door
Other Ports	Two Ethernet ports and one Parallel port
Event Printing *	For agency listed Proprietary Supervising Station operation and for other operations, if an event printer is desired, a supervised and dedicated Simplex Model 4190-9013 agency listed dot matrix printer is recommended; connection is to USB or Serial RS-232 Port of the Server PC (see data sheet S4190-0011 for printer details)
Other Printing *	For report, screen, or graphics printing, a Windows 7 compatible printer can be used. Connection can be USB, Serial RS-232, or LAN/WAN connection via Ethernet
Printable Information	Event printing (with supervised and dedicated dot matrix printer 4190-9013 as explained above)
	Auto-print of auto-jump graphics; prints to Windows default printer
	Reports: Historical logs, System Activity, TrueAlarm Status, TrueAlarm Service, Analog Monitor ZAM Calibration, and Active List; displayed reports can print to a LAN connected (unsupervised) printer
	Screen captures (configurable as negative images to reverse black backgrounds)

Environmental Specifications

Operating Temperature	32° to 120° F (0° to 49° C)
Operating Humidity	Up to 93% RH, non-condensing, at 90° F (32° C)

* **Note:** Parallel port printer connection is supported on 32-bit operating systems only.

Server/Client Operation

TrueSite Workstation Computer. The TrueSite Workstation computer provides the functions of the Server and the system configuration tools. To access the desired features, a system/job specific security service dongle is supplied and is required. For systems not using Remote Clients, the setup of the TrueSite Workstation PC is similar.

Remote Client. For access to TrueSite Workstation information at a remote location, a compatible computer, connected via a Local Area Network (LAN) is equipped with Remote Client software. There are two types of Remote Clients, those with a restricted feature set (not capable of control); and those with a password protected feature set (capable of control). Refer to the interconnection reference diagram below and refer to data sheet S4190-0018 for additional information.

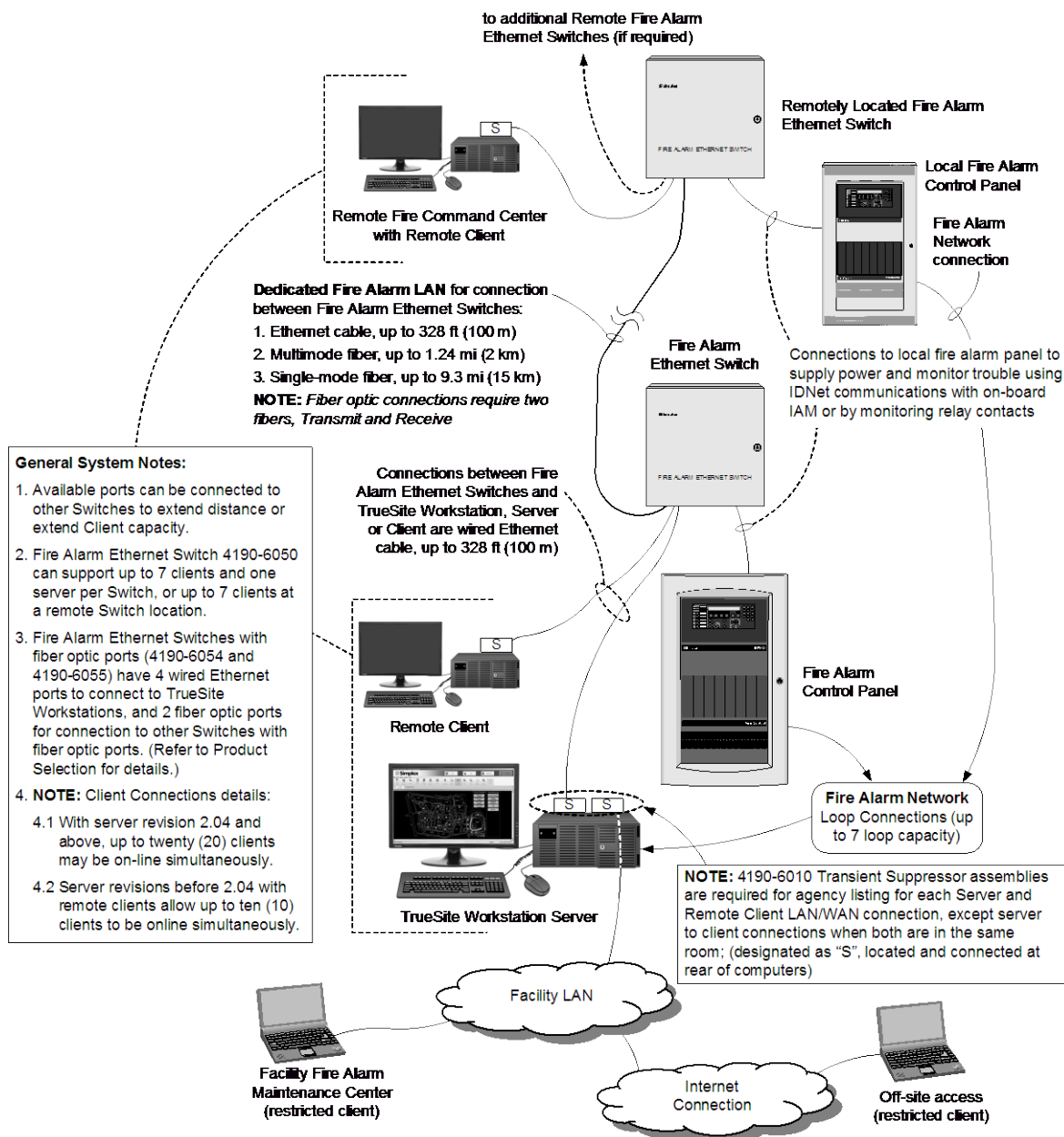
Supervised or Unsupervised Remote Clients.

Remote Clients can be designated as Supervised or Unsupervised. When Supervised, the connection is monitored by the TrueSite Workstation and a loss of connection is audibly reported at both ends along with a dialog screen. When unsupervised, only the client end displays a trouble dialog indicating disconnection from the Server. Remote clients may be laptop computers or other computers used for other functions and are periodically connected to query system status or create reports.

Remote Client Connections. The TrueSite workstation server supports a maximum of twenty (20) Supervised or Unsupervised remote clients, each capable of being on-line simultaneously.

(Server/Client Operation is continued next page)

Server/Client Interconnection Reference



Server/Client Operation (Continued)

TCP/IP Networks. The minimum recommended connection speed for TrueSite Workstation Server or Remote Client to a TCP/IP local area network is 3 Mbps.

Anti-Virus Software. When either the TrueSite Workstation Server or Remote Client computer is connected to a TCP/IP network other than a dedicated Fire Alarm network, it is highly recommended that regularly updated anti-virus software protection be installed on each connected computer. The TrueSite Workstation has been verified as compatible with Symantec EndPoint Protection 12.1 and McAfee Enterprise 8.8.

Additional Reference

Description	Document
Installation and Checkout Instructions	579-834
Operation and Application instructions	579-835
Software Upgrade Instructions	579-838
TrueSite Workstation Configurator Reference Manual	579-844
Quick Reference Operator Instructions	579-878
TrueSite Workstation Parts List	579-888
TrueSite Workstation 3rd Party Interface Software Customer Information Form	579-1155
Localization Procedure	579-946
Release Notes	579-1018
TSW Mobile Client User Guide	579-1154

General System Listings Reference

The following functions are agency listed with the computers and monitors identified under Product Selection on page 7:

- TrueSite workstation PCs, whether stand-alone or functioning as a server to remote clients
- Supervised Remote Clients with protected features that are connected to the server using a dedicated Fire Alarm Network as described on page 10
- Refer to data sheet S4190-0018 for details about Fire Alarm Network Ethernet Switches

Additional agency listings reference:

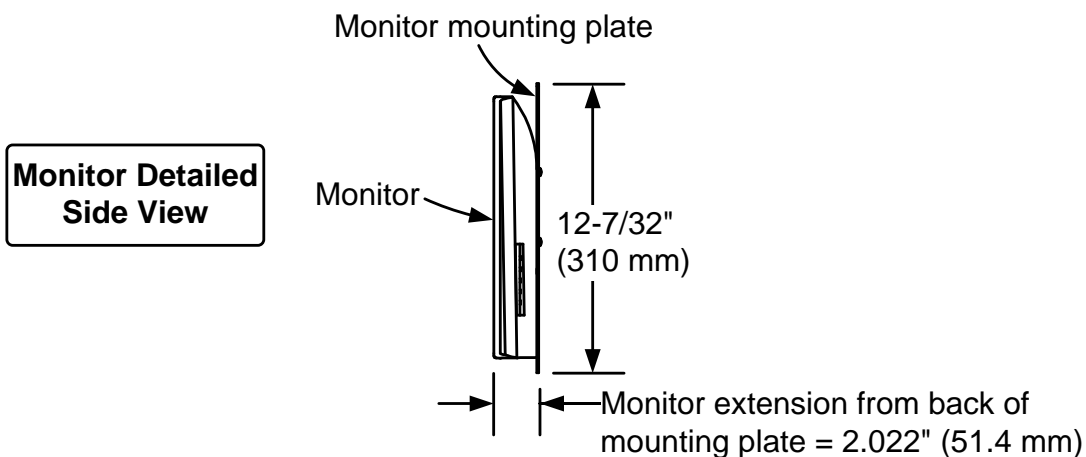
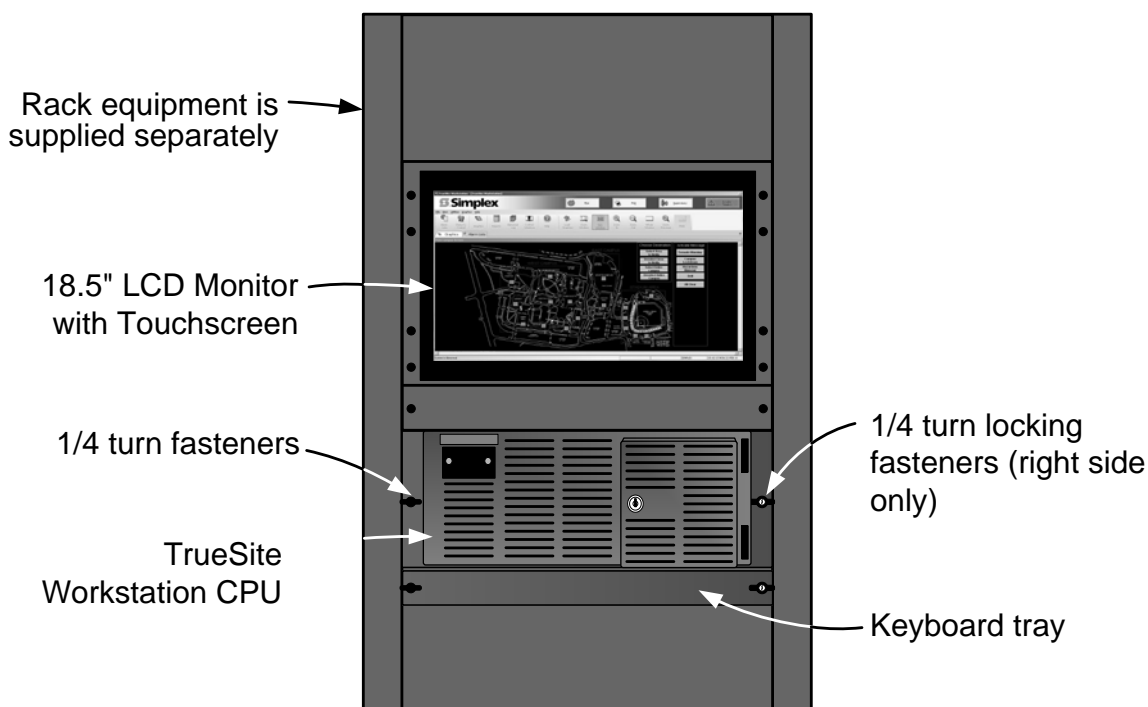
- Restricted feature Remote Clients software on compatible computers (listed for standard office use) provide annunciation features only and can be connected using a facility LAN without system listing impact

Mass Notification Systems Reference

The TrueSite Workstation operates as a UL 2572 listed Central Command Station (CCS) when configured per the following:

1. Select model 4190-8401 (Note: Cannot be used for Supervising Station or Security Monitor applications)
2. Provide an **audio system microphone mounted adjacent to the TrueSite Workstation**, either located within a 4100ES (or 4100U) Fire Alarm Control Panel or Remote Annunciator Panel, or use a Remote Microphone Assembly.
3. The 4100ES/4100U microphone options are Model 4100-1243 for Fire Alarm Control Panels and Model 4100-1244 for Remote Annunciator Panels (refer to data sheet S4100-0034 for details).
4. Remote Microphone Assembly Model 4003-9803 mounts separate from the control panel (refer to data sheet S4100-0053 for details).
5. **Note:** At least **two monitors must be connected** to provide the necessary display information (see exception below). One monitor is required to display the speaker zone status and the other monitor is required to display the event screen.
6. **Exception:** If a 4100ES/4100U Network Display Unit (NDU) is mounted adjacent to the TrueSite Workstation for network audio control with microphone access, a second monitor may not be necessary if the audio control status is viewable. Review the application with the local authority having jurisdiction (AHJ).

Rack Mount Hardware Reference with 18.5" Monitor



Monitor Detailed Side View

NOTE:

The monitor mounting plate attaches to the rack mounting rail and the monitor will extend 2.022" (51.4 mm) from the front of the mounting rail. Review the specified rack enclosure to determine actual monitor extension beyond the rack frame and to ensure that a rack door (if used) has adequate clearance.

TYCO, SIMPLEX, and the product names listed in this material are marks and/or registered marks. Unauthorized use is strictly prohibited. Microsoft and Windows are trademarks of Microsoft Corporation in the United States and/or other countries. Pentium is a trademark of Intel Corporation. AutoCAD is a trademark of Autodesk, Inc. Symantec is a trademark of Symantec Corporation. McAfee is a trademark of McAfee Inc. Sur-Gard DACRs are a product of Digital Security Controls Ltd (DSC), a Tyco company. Contact ID is a trademark of Pittway Corporation.



Tyco Fire Protection Products • Westminster, MA • 01441-0001 • USA
www.simplex-fire.com

S4190-0016-34 3/2016

© 2015 Tyco Fire Protection Products. All rights reserved. All specifications and other information shown were current as of document revision date and are subject to change without notice.