

## VICTORY 120 SPDT Enclosed Relay – Coil: 24VAC/DC, 120VAC

### Contacts: 20A(r)@277VAC, 28VDC



The V120 SPDT Enclosed relay combines an industrial strength relay with an easy to use nipple mount enclosure. The Victory Series provides quick relay mounting without a dedicated field enclosure, making it ideal for retrofit projects. Field-selectable high and low voltage coil inputs provide on-site versatility.

#### APPLICATIONS

- Command contactors
- Control motors
- Isolation
- Device interlocking
- Relay logic
- Sense voltages for alarm conditions

#### Sleek field enclosure eliminates the need for panel space

- Versatile coil and contact ratings minimize the number of models to choose from
- The nipple mount feature allows the Victory Series to be mounted to any electrical enclosure
- HP Ratings make the V120 ideal for control of fractional HP motors
- Flexible tinned stranded wire...fits easily in tight spaces & provides secure connections to wire nuts
- UL508 Listed...designed and listed for field installation... makes electrical inspection a snap

#### SPECIFICATIONS

Operating Temperature	-34°C to 55°C
Operating Humidity	0-95% non-condensing
Expected Relay Life	10 million cycles min.
Relay Status	LED ON=energized
Dimensions...(LxWxH)	2.92" x 1.80" x 1.58"; (H) 1/2" NPT nipple

#### TYPICAL COIL PERFORMANCE

Voltage	Coil Current	
	AC	DC
24V.....	75mA	32mA

#### CONTACT RATINGS

Resistive.....	20A(r)*@277VAC, 28VDC
Motor.....	120VAC, 1HP
	277VAC, 2HP
Ballast.....	277VAC, 20A N.O.
	277VAC, 10A N.C.
Tungsten.....	120VAC, 10A N.O.
	120VAC, 2A N.C.
Pilot duty.....	A300

\*Note operating temperature specification

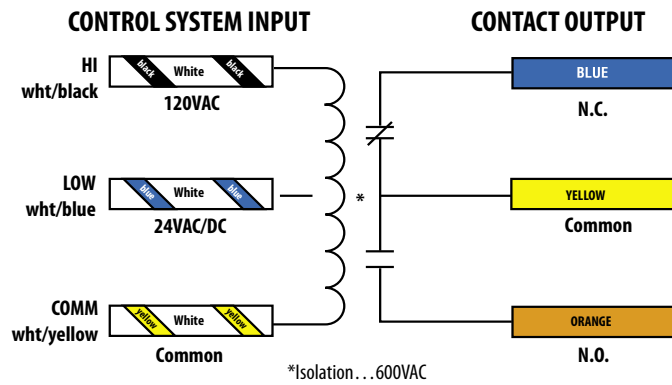
#### ORDERING INFORMATION

MODEL	COIL	CONTACT
V120	24VAC/DC, 120VAC	SPDT, 20A(r)@277VAC



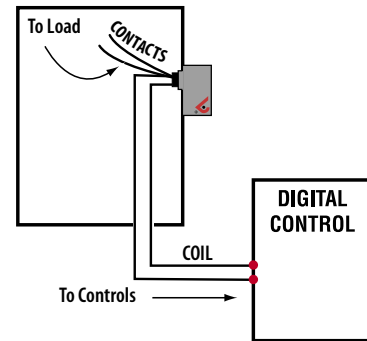
Plenum rated  
per UL 2043

# WIRE COLOR CODES

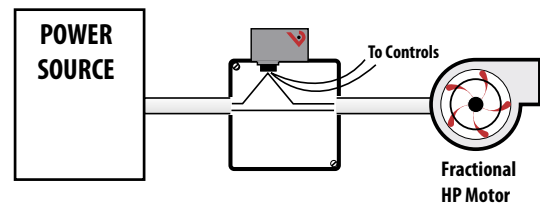


# APPLICATIONS/WIRING EXAMPLE

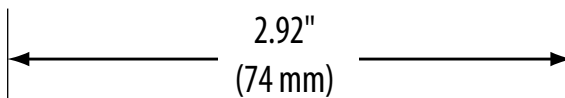
*Nipple mount directly to a panel*



*Nipple mount to 4x electrical box*



# DIMENSIONAL DRAWING



*actual size*

